



SECTION 3

COMBINED CLUBS LONG RACE SERIES

The following Sailing Instructions (SI), in addition to those detailed in Section 1, are applicable to all Groups in the Combined Clubs Long Race Series.

1. SCHEDULE OF RACES

RACE	DAY	DATE	HOST CLUB	START	FINISH	VHF Channel
*Day 1	Saturday	12 Oct 2024	BYC	Midriver	Finish Line 2	VHF Channel 14
Day 2	Saturday	19 Oct 2024	DSS	Midriver	Finish Line 1	VHF Channel 81
Day 3	Saturday	16 Nov 2024	BYC	Midriver	Finish Line 2	VHF Channel 81
*Day 4	Saturday	01 Feb 2025	RYCT	Midriver	Finish Line 1	VHF Channel 14
Day 5	Saturday	01 Mar 2025	RYCT	Midriver	Finish Line 1	VHF Channel 81
*Day 6	Saturday	29 Mar 2025	DSS	Midriver	Finish Line 1	VHF Channel 14

***Combined Event with Harbour Series for Long Race Series race days 1, 4 and 6.**

These race days are part of both the Long and Harbour Race Series. All boats, whether entered in one or both series, will start together and race the same course. Separate results will be produced for each series based on their respective handicaps.

2. CREW DECLARATION

2.1. Crew Declaration

2.1.1. For each race a boat shall submit a Crew Declaration via [TOPYACHT](#) before their warning signal. The Crew Declaration shall confirm that the boat intends to race and shall include required details of persons on board as follows:

- i. Name;
- ii. Contact phone number; and
- iii. Australian Sailing Number in accordance with SI 2.3.

2.2. Boats that do not comply with SI 2.1.1 will be scored DSQ without a hearing for the relevant race.

This changes RRS A5.1. [NP]

2.3. All crew members must comply with the AS Prescription to RRS 46, all participating crew members shall be a member of a club affiliated to Australian Sailing or hold a valid SailPass.

3. GROUPS

The Long Race Series will be conducted in allocated groups. The Race Committee will allocate boats according to size, known performance and TCF handicaps (where known). The composition of each Group will be displayed on each club's notice board and will be available from 16:00 on the Friday before the first race of the series.

4. FIRST WARNING SIGNAL TIMES & GROUP IDENTIFIERS

The starting signal will be five (5) minutes after the warning signal.

GROUP	WARNING SIGNAL Race 1, 4 & 6	WARNING SIGNAL Race 2, 3 & 5	GROUP NUMERAL
Group 1	13:25	09:55	1
Group 2	13:30	10:00	2
Group 3	13:35	10:05	3
Group 4	13:40	10:10	4

5. STARTING AREA, STARTING AND FINISHING LINES

5.1. STARTING LINE – Midriver Start

The Midriver starting line will be between an orange staff or orange flag on the Committee Boat and a yellow inflatable buoy.

The Committee Boat will be moored in an area bounded by a line between Castray Esplanade and Kangaroo Bluff to the north and Crayfish Point and Trywork Point to the south. The name of the Committee Boat for the day will be posted on the start list. It will be standing by on the VHF Race Channel if competitors require directions to the starting line.

5.2. FINISHING LINE 1 – Castray Esplanade (Host Clubs DSS and RYCT)

Finishing line 1 will be between the flagpole on the Castray Box and a yellow with red band inflatable buoy laid approximately east of Castray Box.

5.3. FINISHING LINE 2 – Victoria Esplanade (Host Club BYC)

Finishing line 2 will be between the flagpole on the Victoria Esplanade Box and a yellow with red band inflatable buoy laid approximately west of the Victoria Esplanade Box.

6. STARTING TIMES AND STARTING INSTRUCTIONS

- 6.1. After each start there may be a 30 second time lag in the displaying of the new Group Identifier and course flag/course board but the time for the succeeding Group shall be taken from the signal indicating the start of the previous Group. This changes RRS 26.
- 6.2. Competitors may be advised of starting procedure signals for races 2, 3 and 5 on VHF Channel 81 and for races 1, 4 and 6 on VHF Channel 14.
- 6.3. **Note:** Boats should not transmit on VHF Channel 81 or VHF Channel 14 whilst a starting sequence is in progress except in an emergency.

7. RECALLS

Individual and General Recalls may be announced on the VHF Race Channel. Failure to notify individual recalls by radio shall not be grounds for redress.

8. SHORTENING COURSE

- 8.1. Should the Race Committee decide to shorten course, Code flag S will be displayed on the Finish Box. This will be accompanied by two (2) sound signals and shall apply to all Groups unless group numeral signals are displayed, in which case it shall apply only to those Groups whose signal is displayed.
- 8.2. Boats shall finish from the course side of the finishing line.

9. COURSE SIGNALS

- 9.1. Courses will be indicated by course boards displayed on the Race Committee Boat.
- 9.2. A windward laid mark may be laid as the first mark of the course after the start. This mark will be an orange inflatable buoy and if deployed will be laid approximately to windward at a distance of between 0.5 – 2.0 nautical miles from the starting line. The direction of rounding the windward mark will be indicated on the Race Committee Boat – green for starboard rounding and red for port rounding. If no signal is made, this mark is deleted from the course. The deployment or non-deployment of this mark may be advised by the VHF Race Channel. Failure to advise will not be grounds for redress.

10. COURSES

Note: Where applicable all boats must pass to seaward of the Iron Pot and all Marks are to be rounded and left to starboard unless otherwise indicated.

NOTE: SI 9.2 allows for a windward mark to be laid as the first mark of the course.

COURSE

COURSES 07 – 16 - MARKS SHALL BE ROUNDED AND LEFT TO PORT

		APPROX. DISTANCE NM
07	Start → P → H → A → P → Finishing line 1/2	10.3
08	Start → T → H → A → T → Finishing line 1/2	14.3
09	Start → T → H → A → P → Finishing line 1/2	12.5
10	Start → C → H → C → P → Finishing line 1/2	13.8
11	Start → R → A → T → Finishing line 1/2	16.5
12	Start → R → A → P → Finishing line 1/2	17.0
13	Start → ZC → H → ZC → Finishing line 1/2	16.8
14	Start → Q → A → G → Finishing line 1/2	20.1
15	Start → C → A → C → A → G → Finishing line 1/2	16.3
16	Start → ZC → R → Finishing line 1/2	12.0

COURSES 17 – 19 – MARKS SHALL BE ROUNDED AND LEFT TO STARBOARD

17	Start → R → ZC → Finishing line 1/2	12.0
18	Start → H → T → C → Finishing line 1/2	09.0
19	Start → PH → A → G → Finishing line 1/2	19.0

COURSES 20 – 43 WHERE APPLICABLE ALL BOATS MUST PASS TO SEAWARD OF THE IRON POT AND MARKS SHALL TO BE ROUNDED AND LEFT TO STARBOARD UNLESS OTHERWISE INDICATED.

20	Ralphs Bay - John Garrow - Ralphs Bay Start → R → G → R → Finishing line 1/2	16.6
21	Pigeon Holes - Blackmans Bay Start → PH → Q → Finishing line 1/2	16.9
22	White Rock - John Garrow - White Rock Start → WR → G → WR → Finishing line 1/2	18.7
23	Seacraft Bay Start → S → Finishing line 1/2	19.4
24	Seacraft Bay - Blackmans Bay Start → S → Q → Finishing line 1/2	20.9

25	Ralphs Bay - Piersons Point Start → R → K → Finishing line 1/2	21.5
26	Pigeon Holes - John Garrow - White Rock Start → PH → G → WR → Finishing line 1/2	22.2
27	Blackmans Bay - Ralphs Bay - Blackmans Bay Start → Q (to Port) → R (to Port) → Q → Finishing line 1/2	24.2
28	Seacroft Bay - Blackmans Bay - Seacroft Bay Start → S → Q → S (Port) → Finishing line 1/2	27.4
29	Bull Bay Start → BB → Finishing line 1/2	24.8
30	Bligh Point – Channel Race Start → E (to Port) → Finishing line 1.	25.4
31	Little Betsey Island Start → Little Betsey Island → Finishing line 1/2	28.4
32	Yellow Bluff Start → Y → Finishing line 1/2	28.7
33	Black Jack Rocks Start → Black Jack Rocks → Finishing line 1/2	29.0
34	Betsey Island Start → Betsey Island → Finishing line 1/2	30.0
35	Betsey Island Start → Betsey Island (to Port) → Finishing line 1/2	30.0
36	Ralphs Bay & Black Jack Rocks Start → R → Black Jack Rocks → Finishing line 1/2	30.6
37	Bull Bay (to Port) → Black Jack Rocks (to Port) Start → BB (to Port) → Black Jack Rocks (to Port) → Finishing line 1/2	31
38	Storm Bay Start → SB → Finishing line 1/2	33.0
39	Little Betsey Island - Yellow Bluff Start → Little Betsey Island → Y → Finishing line ½	33.6
40	Ralphs Bay - Black Jack Rocks - Yellow Bluff Start → R → Black Jack Rocks → Y → Finishing line 1/2	35.2

41	Clifton Beach Start → CB → Finishing line 1/2	36.8
42	Variety Bay Start → V → Finishing line 1/2	38.6
43	Storm Bay – Seacroft Bay – Storm Bay Start → SB → S → SB → Finishing line 1/2	46.4

11. MARKS - POSITIONS, BEARING AND DISTANCES ARE APPROXIMATE ONLY

- A Yellow with red band inflatable buoy at the outer end of Castray Esplanade FINISHING LINE 1 or Victoria Esplanade FINISHING LINE 2.
- BB Yellow inflatable buoy 0.3 NM E of Bull Bay Point (~43 05.4'S 147 22.9'E).
- C Yellow inflatable buoy approximately 0.5 NM E of Cartwright Point. The buoy may be moved within 0.5 NM circle from that position.
- CB Orange inflatable buoy 0.5 NM S of Cape Deslacs (~42 59.7'S 147 33.2'E).
- E Yellow inflatable buoy 0.4 NM W of Bligh Point.
- G Orange inflatable buoy with a black band 0.3 NM E of John Garrow Light. The buoy may be moved within 0.3 NM circle from that position.
- H Orange permanent float mark 0.25 NM SW of Howrah Point.
- K Orange inflatable buoy 0.5 NM NE of Piersons Point (~43 02.9'S 147 21.0'E).
- P Yellow permanent float mark 0.5 NM SW of Punch's Reef.
- PH Yellow inflatable buoy 0.6 NM WNW of The Pigeon Holes (~43 00.3'S 147 23.1'E). The buoy may be moved within 0.3 NM circle from that position.
- Q Orange inflatable buoy 0.3 NM E of the northern end of Blackmans Bay (~43.00.03'S 147 20.26'E) . The buoy may be moved within 0.3 NM circle from that position.
- R Orange inflatable buoy in Ralphps Bay 0.8 NM SSE of Droughty Point (~42 57.2'S 147 25.5'E). The buoy may be moved within 0.5 NM circle from that position.
- S Orange inflatable buoy in Seacroft Bay midway between Johns Point and Cape Deliverance (~43 02.5'S 147 24.3'E).
- T Orange permanent float mark 0.4 NM SW of Tranmere Point.
- SB Orange inflatable buoy on a line between the Iron Pot and Cape Raoul. approx. 5.5 NM from the Iron Pot (~43 06.9'S 147 30.9'E).

- V Yellow inflatable buoy 0.5 NM NE of Variety Bay (~43 12.0'S 147 25.7'E).
- WR Orange inflatable buoy laid 0.5 NM from, and within an arc, NW to SW of White Rock.
- Y Orange inflatable buoy 0.5 NM North of Yellow Bluff (~43 07. 2'S 147 24.0'E).
- ZC Yellow inflatable buoy 0.4 NM SE of Crayfish Point. The buoy may be moved within 0.3 NM circle from that position.

12. RACE AREA AND SAFETY CATEGORIES

The Long Race Series will be sailed on the River Derwent, D'Entrecasteaux Channel, Frederick Henry Bay and Storm Bay and will be Category 5 plus a permanently installed VHF transceiver in accordance with NoR 2.2. In all cases AS SR Section 5, 5.01.1 (j) (on a boat without lifelines complying with 3.12, a lifejacket complying with 5.01.1(i), shall be worn by each member of the crew while on deck) shall apply.

13. HANDICAPS

- 13.1. Competitors in the Long Race Series will have a PHS handicap. The Handicap Committee will set the handicaps before the first race of the series, and these may be adjusted after each race. The Race Committee's choice of handicap is final and shall not be grounds for protest.
- 13.2. The Race Committee may, subject to minimum entry requirements in SI 17.3 provide an IRC and/or an ORC result.
- 13.3. Boats entering IRC must have a current valid endorsed IRC certificate.
- 13.4. Boats entering ORC must have a current, valid audited ORC certificate or a current, valid ORC certificate. The Single Number Scoring Option, All Purpose (AP) Time on Time will be used for scoring.

14. RESULTS

- 14.1. Official provisional result sheets will be displayed on the official notice board of each club before 12:00 on the first working day following the race. The time of posting thereof will be shown on the result sheet. Results will be published on each club's website as soon as possible after a race.
- 14.2. Races will be scored based on PHS handicaps and/or IRC and ORC ratings.

15. SCORING. RRS A2.2 does not apply.

15.1. MINIMUM NUMBER OF RACES

- 15.1.1. Two (2) races are required to be scored to constitute a series.

15.2. SERIES SCORE. RRS A5.3. will apply.

15.2.1. When fewer than six (6) races have been scored, a boat's series score will be the total of her race scores.

15.2.2. When six (6) races have been scored, a boat's series score shall be the total of her race scores excluding her worst score.

15.3. Boats wishing to compete in World Sailing or Australian Sailing sanctioned World and or National Championships during the Combined Clubs Sailing Season 2024-25 may apply to the Combined Clubs Committee to be awarded average points for a nominated race in the Long Race Series. If the application to the Combined Clubs Committee is successful, then this changes RRS 62 and average points will be calculated as per RRS Appendix A10 (a).

16. PROTESTS

Protests must be lodged at the DSS, BYC or RYCT within two (2) hours of the last boat finishing in the last race of the day or the Race Committee signalling "No More Racing Today". The protest will be heard at a time determined by the Protest Committee.

17. PRIZES

17.1. A Series Prize will be awarded to the first boat in each Long Race Series Group.

17.2. Additional prizes may be awarded but the OA reserve the right to vary the number of prizes based on the number of entries as follows:

- Three (3) to Five (5) entries 1st prize
- Six (6) or more entries 1st, 2nd & 3rd prizes

17.3. A minimum of three (3) entries are required to constitute a Group.

17.4. Individual race day prizes may be awarded by the Host Club after the race.

18. CHANGES TO THE SAILING INSTRUCTIONS

Any changes to these SIs will be posted on the official notice boards of each club and will also be posted on the online [Official Notice Board](#) by 17:00 on the Friday before the race.

19. TIME LIMITS

The time limit will be 18:30. Boats that have not then finished will be scored 'Did Not Finish' (DNF) without a hearing. This changes Rule 35, A4 and A5.

20. NUMBER OF CREW

All boats are to carry a sufficient number of crew as per NoR 2.4.

21. RETIREMENTS

Any boat retiring shall report the fact to the Race Committee as soon as possible.

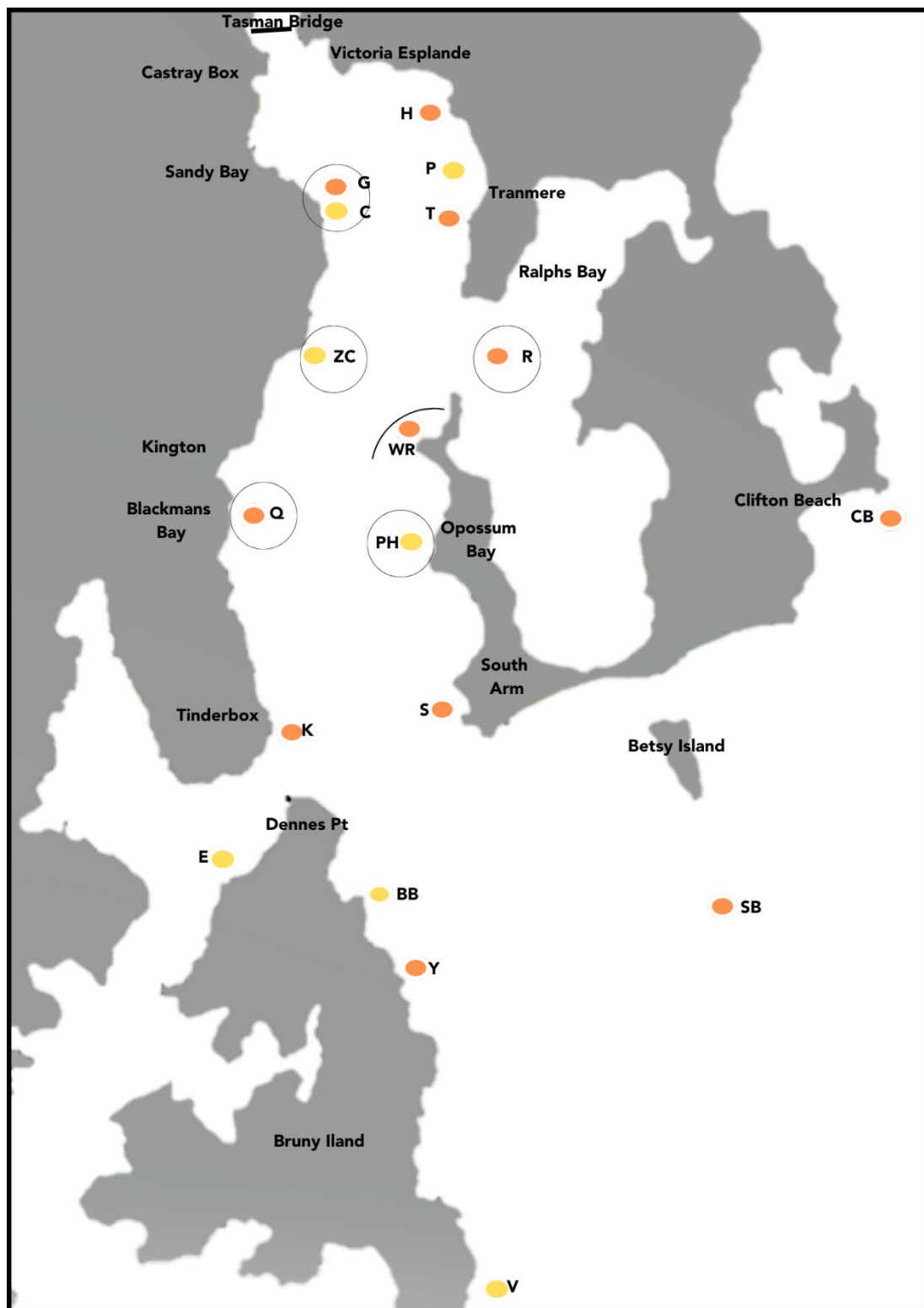
22. RADIO INSTRUCTIONS

22.1. All competitors shall maintain a listening watch on VHF Channel 81 (on Race Days 2, 3 and 5) and VHF Channel 14 (on Race Days 1, 4 and 6) for announcements by the Race Committee.

Competitors should also monitor VHF Channel 16 at all times.

22.2. The Race Committee may broadcast the course to be sailed, names/sail numbers of OCS boats and/or other information of interest to competitors.

SECTION 3 LONG RACE SERIES COURSE CARD



Disclaimer: note map not to scale positions are approximate only.